



REGIONAL HAPPENINGS

Horticultural Events from Around the Country

NORTHEAST


CT, MA, ME, NH, NY, RI, VT

RAP JAN. 30. **Plant-O-Rama.** Trade fair, symposium. Brooklyn Botanic Garden. Brooklyn, NY. (718) 623-7200. www.bbg.org.

RAP FEB. 3. **Festival of Fire & Ice.** Ithaca Children's Garden. Ithaca, NY. (607) 272-2292. www.ithacachildrengarden.org.

RAP FEB. 3. **Native Seed Starting.** Workshop. Berkshire Botanical Garden. Stockbridge, MA. (413) 298-3926. www.berkshirebotanical.org.

RAP FEB. 8. **Winter Rose Pruning Workshop.** Snug Harbor Cultural Center & Botanical Garden. Staten Island, NY. (718) 448-2500. www.snug-harbor.org.

 FEB. 22–25. **Connecticut Flower & Garden Show.** Connecticut Convention Center, Hartford, CT. (860) 844-8461. www.ctflowershow.com.

RAP FEB. 24. **Grafting Woody Plants.** Class. The Arnold Arboretum of Harvard University. Boston, MA. (617) 384-5209. www.arboretum.harvard.edu.

Looking ahead

RAP MAR. 3–APR. 22. **The Orchid Show.** Exhibition. New York Botanical Garden. Bronx, NY. (718) 817-8700. www.nybg.org.

MAR. 14–18. **Boston Flower & Garden Show.** Seaport World Trade Center. Boston, MA. (800) 258-8912. www.bostonflowershow.com.

MAR. 22–25. **The Maine Flower Show.** Maine Landscape & Nursery Association. Augusta, ME. (207) 623-6430. www.maineflowershow.com.


MID-ATLANTIC

DC, DE, MD, NJ, PA, VA, WV

RAP JAN. 27. **Seed Starting.** Workshop. Pennsylvania Horticultural Society. Rothman Institute Cabin at Dilworth Park. Philadelphia, PA. (215) 988-8883. www.phsonline.org.

RAP JAN. 30 & 31. **Fairy Garden Workshop.** Norfolk Botanical Garden. Norfolk, VA. (757) 441-5830. www.norfolkbotanicalgarden.org.

Botanical gardens and arboreta that participate in AHS's Reciprocal Admissions Program are identified with the **RAP** symbol. AHS members showing a valid membership card are eligible for free admission to the garden or other benefits. Special events may not be included; contact the host site for details or visit www.ahsgardening.org/rap.

Flower and garden shows that offer free or discounted admission to AHS members or present the AHS Environmental Award are designated by a  symbol. For details on the specific benefits offered, visit www.ahsgardening.org/2018-flower-shows.

JAN. 27 & FEB. 1. **Native "Plantscapes" for Year-Round Interest.** Class. Mt. Cuba Center. Hockessin, DE. (302) 239-4244. <https://education.mtcubacenter.org>.

FEB. 2. **Today's Horticulture Symposium.** Longwood Gardens. Kennett Square, PA. (610) 388-1000. www.longwoodgardens.org.

RAP FEB. 6. **From the Inside Looking Out: A Dirt Gardener's Journey to Elegance.** Lecture. Hillwood Estate, Museum & Gardens. Washington, DC. (202) 686-5807. www.hillwoodmuseum.org.

RAP FEB. 14–16. **Gardening With Purpose and Passion.** Symposium. Lewis Ginter Botanical Garden. Richmond, VA. (804) 262-9887. www.lewisginter.org.

RAP FEB. 25. **Harvesting Garden Water.** Lecture. Green Spring Gardens. Alexandria, VA. (703) 642-5713. www.greenspring.org.

Looking ahead

RAP MAR. 3–11. **2018 Philadelphia Flower Show.** Pennsylvania Horticultural Society. Philadelphia, PA. (215) 988-8800. www.theflowershow.com.

MAR. 3 & 4, 9–11. **Maryland Home & Garden Show.** Maryland State Fairgrounds. Timonium, MD. (410) 863-1180. www.mdhomeandgarden.com/spring.

MAR. 15. **Land Ethics Symposium: Creative Approaches for Ecological Landscaping.** Delaware Valley University, Doylestown, PA. (215) 862-2924. <https://bhwp.org/learn/conferences-and-symposia/land-ethics-symposium/>.

SOUTHEAST

AL, FL, GA, KY, NC, SC, TN

RAP JAN. 27. **The Inspired Gardener.** Symposium. Atlanta Botanical Garden. Atlanta, GA. (404) 876-5859. www.atlantabg.org.

RAP FEB. 3. **Defense Systems of Native Plants.** Class, workshop. State Botanical Garden of Georgia. Athens, GA. (706) 542-6158. www.botgarden.uga.edu.

RAP FEB. 3. **Understanding and Improving Garden Soils.** Class. JC Raulston Arboretum at NC State University. Raleigh, NC. (919) 515-3132. www.jcra.ncsu.edu.

RAP FEB. 18. **Get Ready for Spring: A Vegetable Gardening Workshop.** North Carolina Botanical Garden. Chapel Hill, NC. (919) 962-0522. www.ncbg.unc.edu.

RAP FEB. 20. **Vertical Gardening.** Class. Sarah P. Duke Gardens-Duke University. Durham, NC. (919) 684-3698. www.gardens.duke.edu.

RAP FEB. 22. **Pollinators.** Lecture. Wing Haven. Charlotte, NC. (704) 331-0664. www.winghavengardens.org.

Looking ahead

MAR. 1. **Annual Spencer Lecture with Guest Speaker Laura Dowling.** Birmingham Botanical Gardens. Birmingham, AL. (205) 414-3950. www.bbgardens.org.

MAR. 1–4. **Nashville Lawn and Garden Show.** The Fairgrounds Nashville. Nashville, TN. (615) 772-6809. www.nashvillelawnandgardenshow.com.

NORTH CENTRAL

IA, IL, IN, MI, MN, ND, NE, OH, SD, WI

RAP JAN. 27 & 28. **Super Seed Weekend.** Chicago Botanic Garden. Glencoe, IL. (847) 835-5440. www.chicagobotanic.org.

JAN. 27 & 28. **Winter Carnival Orchid Show.** Orchid Society of Minnesota. St. Paul, MN. (651) 487-8201. www.minnesotaorchidsociety.com.

RAP FEB. 3. **Engendered is the Flower: Medieval Gardens Past and Present.** Lecture. Allen Centennial Garden. Madison, WI. (608) 576-2501. www.allencentennialgardens.org.

RAP FEB. 28. **Dig In: Veggie Gardening for the Slightly Seasoned.** Class. Cleveland Botanical Garden. Cleveland, OH. (216) 721-1600. www.cb garden.org.

Looking ahead

RAP MAR. 1–APR. 30. **Fred & Dorothy Fichter Butterflies are Blooming.** Exhibition. Frederik Meijer Gardens and Sculpture Park. Grand Rapids, MI. (888) 957-1580. www.meijergardens.org.

RAP MAR. 8. **Adaptive by Design; How the Changing Climate is Key in the Landscapes of Tomorrow.** Conference. The Holden Arboretum. Kirtland, OH. (440) 946-4400. www.holdenarb.org.

RAP MAR. 17 & 18. **Ann Arbor Orchid Festival at Matthaei.** University of Michigan Matthaei Botanical Gardens and Nichols Arboretum. Ann Arbor, MI. (734) 647-7600. www.mbgna.umich.edu.

SOUTH CENTRAL

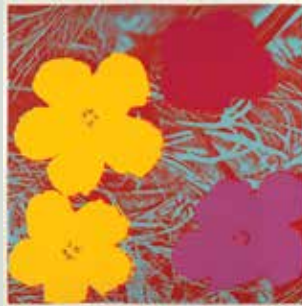
AR, KS, LA, MO, MS, OK, TX

RAP JAN. 27. **Winter Tree Fest.** Lady Bird Johnson Wildflower Center. Austin, TX. (512) 232-0200. www.wildflower.org.

RAP FEB. 24. **Small Space Gardening.**

Andy Warhol as Naturalist at Selby Gardens

ANDY WARHOL'S artwork is immediately recognizable: false-color images of celebrities and pop culture, and homages to a bygone era. Warhol also drew inspiration from nature, however, and this winter Marie Selby Botanical Gardens in Sarasota, Florida, will display some of his plant-inspired designs. "This exhibition grew from an idea about how to best capture the energy behind Warhol's commitment to natural beauty and conservation," says Carol Ockman, the exhibition's curator.



'Flowers' by Andy Warhol

Beginning February 11, "Warhol: Flowers in the Factory" will include silk screenings of hibiscus and other flowers by the iconic artist. In addition, the garden will have two poinsettia prints on loan for the exhibition. Selby has also acquired old photographs of Warhol in the woods to provide some biographical context.

Some of Selby's plants will get a Warholesque twist: Modular, repetitive arrangements will spread through the garden and conservatory. "We hope visitors leave with an understanding that plants are art in and of themselves," says Jennifer Rominiecki, Selby's president and CEO. "The horticultural displays are dynamic, colorful, and striking; they will make people reexamine how they view plants." The exhibition, which runs through June 30, will also feature Warhol-inspired performance arts programs and offer opportunities for visitors to make their own Warhol-style prints. For more information, visit www.selby.org.

—Aaron Dorman, Editorial Intern

Yes!
Daylilies have changed!
See the latest!
Get The Daylily Journal
It's included with your \$25 membership to the American Hemerocallis Society
www.daylilies.org/AHSmemb.html

NATURE CONNECTS

at
Harry P. Leu Gardens
JANUARY 6 - APRIL 22, 2018

Art with LEGO® Bricks
By Sean Kenney

1920 North Forest Ave. | Orlando, FL 32803 | 407.246.2620 | leugardens.org

Sponsored in part by the State of Florida, Department of State, Division of Cultural Affairs and the Florida Council on Arts and Culture.

Morpho Mardi Gras in Missouri

FROM FEBRUARY 1 through March 31, the Missouri Botanical Garden is celebrating the Mardi Gras season by setting loose thousands of blue morpho butterflies (*Morpho peleides*) inside the Butterfly House. The conservatory will be decorated



A blue morpho in the Butterfly House

in the fashion of a New Orleans-style Mardi Gras festival, including colorful drapery, lighting, and décor.

Visitors to the conservatory will be in close proximity to the butterflies, observing them in flight and feeding at fruit trays. The butterflies are native to the rainforests of Central America, and are particularly prevalent in Costa Rica. During flight, they confound predators with a stark color contrast: While their upper wing surfaces are a bright azure blue, the undersides are a dull brown for camouflage. Although they are not pollinators themselves, blue morphos and their exotic beauty are viewed as an “ambassador species” for both butterflies at large and rainforest conservation.

“We hope that learning about the blue morphos and Costa Rica inspires visitors to help our native butterflies by creating their own pollinator gardens,” says Laura Chisholm, senior manager of collections at the Butterfly House.

Themed events at the Butterfly House during the celebration will include “Bugs on Parade,” live blues and jazz bands from the National Blues Museum, creole-inspired food, and live animal encounters in partnership with the Endangered Wolf Center.

You can find out more about the butterflies and the exhibit at www.missouribotanicalgarden.org/visit/family-of-attractions/butterfly-house.

—Aaron Dorman, Editorial Intern

Class. Missouri Botanical Garden. St. Louis, MO. (314) 577-5118. www.mobot.org.

RAP FEB. 27 & 28. **Mosaic-Making Workshop.** Garvan Woodland Gardens. Hot Springs, AR. (501) 262-9300. www.garvangardens.org.

Looking ahead

MAR. 24. **Texas Thyme Unit Herb Festival.** Wynne Home Arts Center. Huntsville, TX. (936) 291-5424. www.thewynnehome.com.

RAP MAR. 24 & 25. **Arboretum Arbor Day Native Plant Sale.** The Crosby Arboretum. Picayune, MS. (601) 799-2311. www.crosbyarboretum.msstate.edu.

SOUTHWEST

AZ, CO, NM, UT

RAP FEB. 3. **The Forgotten Season: Planting for Winter Beauty and Wildlife.** Class. Denver Botanic Gardens. Denver, CO. (720) 865-3500. www.botanicgardens.org.

FEB. 9–11. **Colorado Springs Home & Landscape Expo.** Norris-Penrose Event Center. Colorado Springs, CO. (952) 881-5030. www.homeshowcenter.com.

in the fashion of a New Orleans-style Mardi Gras festival, including colorful drapery, lighting, and décor.

Visitors to the conservatory will be in close proximity to the butterflies, observing them in flight and feeding at fruit trays. The butterflies are native to the rainforests of Central America, and are particularly prevalent in Costa Rica. During flight, they confound predators with a stark color contrast: While their upper wing surfaces are a bright azure blue, the undersides are a dull brown for camouflage. Although they are not pollinators themselves, blue morphos and their exotic beauty are viewed as

an “ambassador species” for both butterflies at large and rainforest conservation.

“We hope that learning about the blue morphos and Costa Rica inspires visitors to help our native butterflies by creating their own pollinator gardens,” says Laura Chisholm, senior manager of collections at the Butterfly House.

Themed events at the Butterfly House during the celebration will include “Bugs on Parade,” live blues and jazz bands from the National Blues Museum, creole-inspired food, and live animal encounters in partnership with the Endangered Wolf Center.

You can find out more about the butterflies and the exhibit at www.missouribotanicalgarden.org/visit/family-of-attractions/butterfly-house.

RAP FEB. 10. **Intro to Permaculture Workshop.** Denver Botanic Gardens. Denver, CO. (720) 865-3500. www.botanicgardens.org.

Looking ahead

RAP MAR. 2–25. **Chris Adams Art Exhibit.** Red Butte Garden, the University of Utah. Salt Lake City, UT. (801) 585-0556. www.redbuttegarden.org.

WEST COAST

CA, HI, NV

RAP FEB. 17. **Rose Revival Workshop.** Mendocino Coast Botanical Gardens. Fort Bragg, CA. (707) 964-4352. www.gardenbythesea.org.

RAP FEB. 23. **Exploring Hawaiian Health-Promoting Plants.** Class. Lyon Arboretum. Honolulu, HI. (808) 988-0456. www.manoa.hawaii.edu/lyonarboretum.

FEB. 23–25. **Pacific Orchid Exposition.** San Francisco Orchid Society. San Francisco County Fair Building Hall of Flowers at Golden Gate Park. San Francisco, CA. www.orchidsanfrancisco.org.

Looking ahead

RAP MAR. 3. **Buzz About Native Bees.** Workshop. Santa Barbara Botanic Garden. Santa Barbara, CA. (805) 682-4726. www.sbbg.org.

RAP MAR. 3. **Cherry Blossom Festival.** South Coast Botanic Garden. Palos Verdes Peninsula, CA. (310) 544-1948. www.southcoastbotanicgarden.org.

RAP MAR. 24 & 25. **Spring Plant Sale.** Springs Preserve Botanical Garden. Las Vegas, NV. (702) 822-7700. www.springspreserve.org.

NORTHWEST

AK, ID, MT, OR, WA, WY

FEB. 7–11. **Northwest Flower & Garden Festival.** Washington State Convention Center. Seattle, WA. (253) 756-2121. www.gardenshow.com.

RAP FEB. 13–MAR. 25. **Crave: An Early Glimpse of Spring.** Exhibit. W.W. Seymour Botanical Conservatory. Tacoma, WA. (253) 591-5330. www.metroparkstacoma.org/conservatory.

FEB. 22–25. **Portland Spring Home & Garden Show.** Portland Expo Center. Portland, OR. (503) 479-2660. www.homeshowpdx.com.

RAP FEB. 23. **Botanical Gardens and Environmental Education: An Exchange Between the Pacific Northwest and Eastern Russia.** Lecture. Bellevue Botanical Garden. Bellevue, WA. (425) 452-2750. www.bellevuebotanical.org.

Looking ahead

MAR. 21. **Washington Botanical Symposium.** University of Washington Botanic Gardens. Seattle, WA. (206) 543-8616. www.botanicgardens.uw.edu.

CANADA

RAP JAN. 27. **Irresistible Dreamy Woody Plants.** Workshop. Toronto Botanical Garden. Toronto, ON. (416) 397-1341. www.torontobotanicalgarden.ca.

RAP JAN. 28. **Grow Your Own Cut Flower Garden Workshop.** Horticulture Centre of the Pacific. Victoria, BC. (250) 479-6162. www.hcp.ca.

RAP FEB. 7. **Botanical Gardens and Conservation in the 21st Century.** Lecture. Toronto Botanical Garden. Toronto, ON. (416) 397-1341. www.torontobotanicalgarden.ca.

Looking ahead
MAR. 9–18. **Canada Blooms.** Flower and Garden Festival. Enercare Centre. Toronto, ON. (416) 447-8655. www.canadablooms.com.