



OREGON:

The Gardens of Portland & the Farm-to-Table Bounty of the Willamette Valley

*With AHS Hosts
Holly and Osamu Shimizu*

August 19–23, 2024

Dear Friends,

I'm pleased to invite you to join the American Horticultural Society for an enchanting exploration of the lush beauty of Portland and the Willamette Valley. Led by AHS Hosts Holly and Osamu Shimizu, we have created an immersive program that celebrates the region's magnificent gardens, sustainable farming practices, and farm-to-table culinary excellence.

In Portland, we will experience the renowned Portland Japanese Garden, as well as the charming Lan Su Chinese Garden, both oases of tranquil beauty and harmony nestled within the city. In the Willamette Valley, we will journey to a pasture-based farm that practices holistic land management to discover the farm-to-table movement in action. We also will savor the fruits of the region's renowned vineyards, with a tasting and tour at a picturesque winery.

Furthermore, dahlia enthusiasts are in for an extraordinary experience as the tour is timed to coincide with the spectacular Swan Island Dahlia Festival. This event showcases thousands of dahlias in peak bloom, creating a breathtaking display that will captivate your senses.

Throughout the journey, we'll enjoy several delectable meals at hand-picked restaurants known for their commitment to sustainable practices and use of locally sourced, seasonal ingredients.

Along the way we will meet with fascinating local residents steeped in the area's agriculture and horticulture, including farmers, farm-to-table chefs, a winemaker, and the owner of one of Portland's top nurseries.

We hope you will join us in August 2024 for this fantastic journey to explore the bountiful beauty of Portland and the Willamette Valley and for delicious farm-to-table dining.

Sincerely,



Suzanne Laporte
President & CEO



The Oregon Garden
(photo by Rick Obst)

When you travel with the AHS, you make a difference.

Designed for garden enthusiasts who love to explore horticultural wonders around the world, AHS Travel Study offers exceptional programs that include many exclusive experiences and unique insights. Your participation in an AHS Travel Study program supports the AHS's nonprofit work to increase knowledge among gardeners, inspire passion for plants and the natural world, and encourage responsible stewardship of the earth.

AHS Hosts Holly and Osamu Shimizu



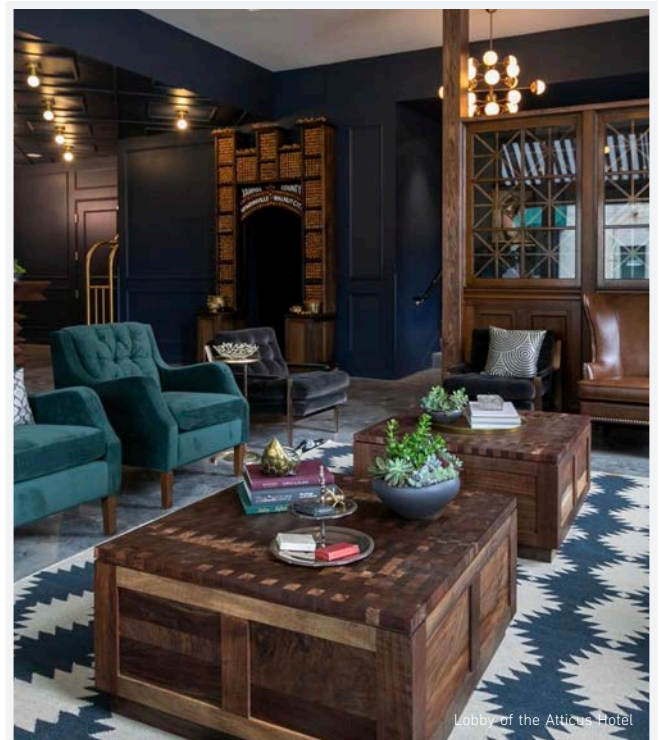
Holly and Osamu Shimizu are a renowned horticultural couple whose shared passion for gardening has inspired and beautified landscapes worldwide.

Holly, a member of the American Horticultural Society Board of Directors and retired Executive Director of the United States Botanic Garden, is a globally acclaimed horticulturist. Recognized for her ten-year tenure as a host on the popular Victory Garden television show on PBS, she has worked in gardens throughout the world and has garnered numerous accolades, including The Scott Medal & Award from The Scott Arboretum of Swarthmore College, the Thomas Roland Medal for outstanding contributions to horticultural education from the Massachusetts Horticultural Society, and the Professional Award for an Outstanding Public Garden Director from the American Horticultural Society. Holly's dedication to nurturing an appreciation for plants is reflected in her writings for numerous publications and her role as an international flower show judge.

Osamu grew up in Japan where he studied and worked in both historic and contemporary Japanese gardens. He worked in Europe for over ten years helping with garden designs, mapping, and garden improvements. In 1982 he started his own garden design/build company, Shimizu Landscape Design. His portfolio showcases an array of gardens, with a significant emphasis on Japanese aesthetics and a fusion of eastern and western influences.

Accommodations at the luxury boutique Atticus Hotel, McMinnville

The independently owned and operated Atticus Hotel is luxury on Willamette Valley terms, drenched in comfort without sacrificing personality. No two of the 36 rooms are exactly alike, but all feature inviting amenities like fireplaces, carefully curated local furniture, locally sourced teas and coffees, and art on the walls by local artists. Ideally located in historic downtown McMinnville, visitors can easily walk to 18 tasting rooms, 35 restaurants, and a bevy of eclectic boutiques. The Atticus Hotel has won a number of accolades, including being named a Top 10 Best Winery Hotel in the United States by USA Today in 2022 and TripAdvisor's Travelers' Choice Award in 2023.



Lobby of the Atticus Hotel

Itinerary

MONDAY, AUGUST 19

Welcome to Oregon

Arrive independently at Portland International Airport (PDX). (Travelers coming from points further east may want to consider arriving a day early and staying at a nearby airport hotel. Recommendations and assistance in booking a pre-night hotel will be provided upon request.)

Meet your tour hosts and fellow AHS travelers and transfer by private motorcoach to the fertile Willamette Valley. Arrive in the charming city of McMinnville and check into the **Atticus Hotel**, a luxury boutique property ideally located in the historic downtown district.

After time to freshen up, we reconvene and walk to the nearby **Humble Spirit**, one of the area's renowned farm-to-table restaurants, for our first taste of locally sourced ingredients from the Willamette Valley.

(Included meals: Dinner)

TUESDAY, AUGUST 20

Sustainable Farming in the Willamette Valley

After breakfast at the hotel, we drive to the north end of the Willamette Valley to **Marion Acres**, a family pasture-based farm on 47 acres of lush green hills. The farm practices holistic land management, with pasture-raised animals, rotational grazing, and sustainable practices. Tour the farm to see the entire "farm-to-table" process from chick, to pasture, to processing, to packaging, and finally to market. Also enjoy time to peruse the on-site market.

Enjoy a casual yet delicious lunch at **Red Hills Market**, serving seasonal dishes made with local ingredients from the surrounding Willamette Valley.

Continue into Oregon Wine Country and stop at **Natalie's Estate Winery** for a tour of the vineyard by one of the estate's winemakers. Learn about the winery's sustainable winegrowing practices, from the vineyard to the bottle. Afterwards, be treated to a private seated tasting hosted by the winemaker, who will pour hand-selected wines paired with cured salami, imported olives, artisan cheeses, and marcona almonds.

Return to the hotel in the late afternoon. Dinner is independent this evening.

(Included meals: Breakfast, Lunch)

WEDNESDAY, AUGUST 21

The Gardens of Portland

Today is dedicated to the stunning gardens of Portland. Begin with a private guided tour of the celebrated **Portland Japanese Garden**, covering eight distinct garden spaces from the lush greens of the Strolling Pond Garden to the authentic tea house in the Tea Garden, to the contemplative spaces in the Sand and Stone Garden. Also take time to explore the richness of Japanese culture and arts at the elegant Cultural Village.



Photos (from top):
Willamette Valley Wine Country (Sheila Sund);
Vineyard Grape Vines, Willamette Valley;
Stone Pagoda at the Portland Japanese Garden (Natalie Wagner)

Enjoy lunch at **Higgins**, a pioneer of the farm-to-table movement in Portland under James Beard Award-winning chef Greg Higgins.

Continue to **Lan Su Chinese Garden**, regarded as one of the most authentic Chinese gardens outside of China. Take a guided tour and learn about the venerable Chinese traditions and concepts on which the garden is based, melding art, history, architecture, design, and nature in harmony.

Our day in Portland concludes with a visit to the exceptional **Portland Nursery**, highly regarded throughout the Portland community for its horticultural excellence. One of the owners will welcome the group and explain how the expansive inventory is selected and cared for, followed by a staff-led tour through the nursery's almost five acres of retail and greenhouse space.

Return to McMinnville. The evening and dinner are independent.

(Included meals: Breakfast, Lunch)

THURSDAY, AUGUST 22

The Oregon Garden and the Swan Island Dahlia Festival

Spend the morning at **The Oregon Garden**, a stunning botanical garden encompassing over 80 acres and featuring more than 20 specialty gardens showcasing the diverse botanical beauty of the Willamette Valley and the Pacific Northwest. Take a private tour led by The Oregon Garden's Botanical Curator, covering the garden's history, highlights, and current projects.

Stop at **Filberts Farmhouse Kitchen** and enjoy a lunch of classic American comfort food featuring locally sourced ingredients.

This afternoon, take part in the **Annual Dahlia Festival** at the renowned **Swan Island Dahlias**, the largest and leading dahlia grower in the United States. Stroll through almost 40 acres of over 370 varieties of stunning dahlias in full bloom, speak with the growers, and take time to peruse the onsite vendor market.

Return to the hotel to freshen up before heading out to our celebratory farewell dinner at **Joel Palmer House**. The Joel Palmer House ranks as one of Oregon's finest historic homes and most exquisite dining experiences, with a menu featuring wild mushrooms, truffles, and the local Oregon bounty of fresh produce. Enjoy a carefully curated five-course dinner, and speak with the owner/chef, who will show his kitchen, garden, and wine cellar.

(Included meals: Breakfast, Lunch, Dinner)

FRIDAY, AUGUST 23

Departures

Check out of the Atticus Hotel and depart on a group transfer to Portland International Airport (PDX) for return flights home.

(Included meals: Breakfast)



Photos (from top):
Lan Su Chinese Garden, Window (Daderot);
Water feature at The Oregon Garden (Rick Obst);
Dahlia (Annette Meyer)

OREGON: The Gardens of Portland & the Farm-to-Table Bounty of the Willamette Valley

August 19–23, 2024



Trip Information

AHS TRAVEL STUDY

OREGON: THE GARDENS OF PORTLAND & THE FARM-TO-TABLE BOUNTY OF THE WILLAMETTE VALLEY

August 19–23, 2024

This custom AHS Travel Study program has been created uniquely for AHS travelers and is offered in collaboration with International Seminar Design, Inc.

TOUR COST:

Land Package.....	\$5,395
Single Supplement.....	\$1,095

Land Package is per person, based on double occupancy and a minimum of 12 paying participants.

AHS TRAVEL STUDY ACTIVITY LEVEL DESCRIPTION: AHS

Travel Study programs are designed to offer immersive experiences and often involve long days filled with exploration and extensive walking on uneven terrain. To participate in a program, it is recommended to be in good physical condition and prepared to walk for a minimum of two miles each day.

DEPOSIT & FINAL PAYMENT: A deposit of \$1,000 per registrant is required to reserve space on the tour, of which \$500 is nonrefundable for ISDI's registration and planning fee unless the tour is cancelled due to low enrollment. This deposit may be paid by check or by Visa, MasterCard, or American Express. Final balance will be invoiced and is due on May 10, 2024, and must be paid by check to International Seminar Design, Inc. Registrations are accepted after this date on a space-available basis.

FLIGHTS: Airfare is not included in the tour price. Participants are responsible for their own air arrangements. Please do not purchase airline tickets until the operation of the tour is confirmed by ISDI.

CANCELLATIONS & REFUNDS: Cancellation by participant must be made in writing to ISDI and is effective only upon acknowledged receipt by ISDI. There is a non-refundable registration and planning fee of \$500 per person regardless of cancellation date. Written cancellation received by ISDI on or before May 10, 2024: full refund minus the \$500 per person registration and planning fee. Written cancellation received by ISDI between May 11 and July 5, 2024: full refund minus \$2,700 per person cancellation fee (includes the registration and planning fee). Written cancellation received by ISDI on or after July 6, 2024: no refund. Tour registration is non-transferable. In the case of cancellation, substitutions are not allowed. After the tour has commenced, no refunds will be issued for any reason including, but not limited to, unused portions of tour. If the tour is cancelled by ISDI or the American Horticultural Society due to low enrollment, active registrants will receive a full refund of all tour payments.

TERMS & CONDITIONS: Upon receipt of registration, ISDI will send registrant a Participant Tour Agreement detailing the full terms and conditions for this tour. This document must be signed and returned to ISDI before participant's registration is considered complete and any arrangements can be confirmed.

TRAVEL INSURANCE: Travel Insurance is not included in the tour cost, but participants are strongly encouraged to purchase a travel protection plan in conjunction with this tour, including coverage of trip cancellation, trip interruption, emergency evacuation/repatriation, medical expenses, lost or damaged baggage, and other expenses and/or losses incurred due to unexpected situations. Should a participant cancel at any time after registering for the tour, ISDI must strictly abide by the cancellation policy outlined herein. Travel insurance information will be provided upon receipt of your registration. One travel insurance provider to consider is USI Affinity Travel Insurance Services. For more information on the plan for AHS travelers, visit www.ahsgardening.org/travel. Information is also available at this link regarding optional flight and travel arrangement services.

TOUR PRICE INCLUSIONS: 4 nights at the Atticus Hotel, McMinnville; breakfast daily at the hotel, 3 lunches, 2 dinners (water, soft drinks, coffee, tea included with all meals; 2 glasses of wine or beer included with dinners); ground transportation by private motor coach, including 1 group airport transfer upon arrival from Portland International Airport (PDX) to the Atticus Hotel on August 19, 2024, and 1 group airport transfer upon departure from the Atticus Hotel to PDX on August 23, 2024; entrance fees to sites per itinerary; services of an ISDI Tour Manager; expert local guides; personal listening devices for duration of the tour; handling of 2 pieces of luggage per person at hotel; gratuities for guides, drivers, and restaurant staff at included group meals; bottled water on motor coach; service charges and taxes.

TOUR PRICE EXCLUSIONS: Airline tickets, airline taxes and surcharges, and baggage fees; airport portage; airport transfers for those not taking the scheduled group transfers; meals other than those specified in the itinerary; gratuities for hotel housekeeping; personal items such as telephone calls, room service, valet service, à-la-carte orders, specialty wines and liquors, laundry charges, travel extensions, or tour deviations; travel insurance; any other items not specifically included in the itinerary.

FOR MORE INFORMATION ABOUT AHS TRAVEL STUDY PROGRAMS:

Please contact travel@ahsgardening.org or 703-768-5700, ext. 117. Information is also available at www.ahsgardening.org/travel.

OREGON: The Gardens of Portland & the Farm-to-Table Bounty of the Willamette Valley

August 19–23, 2024



Registration Form

Name - Participant 1

Name - Participant 2

Address

City

State

Zip

Home Phone

Cell Phone

E-mail Address - Participant 1

E-mail Address - Participant 2

ROOMING OPTIONS: (please select)

- Double Occupancy; I will share a room with _____
 We prefer separate beds
- Single Occupancy (\$1,095 single supplement)
 I would like a roommate but will pay the single supplement if one cannot be found

TOUR DOCUMENTS:

ISDI will send all documents pertaining to the tour by email to the email address listed above.

- If you wish to receive hardcopy versions of the tour documents by post as well, please check this circle. Paper documents will not be sent to your home address unless this circle is checked.

DEPOSIT (\$1,000 per person):

_____ # of persons _____ Amount Enclosed

- Visa MasterCard American Express Check (make check payable to International Seminar Design, Inc.)

Card Number

Exp. (mm/yy)

Name as it appears on card

CVV Security Code

EACH PARTICIPANT MUST SIGN

By registering and paying the deposit for this tour, registrant acknowledges that he/she has carefully read and understands all information contained in the tour brochure, recognizes and accepts any risks therein, and agrees to be bound by the terms and conditions outlined above.

Signature - Participant 1 / Date

Signature - Participant 2 / Date

COMPLETE AND RETURN THIS FORM TO:

International Seminar Design, Inc.
5614 Connecticut Ave NW, #295
Washington, DC 20015
or by email at info@isditravel.com

TO REGISTER BY PHONE, CALL:

International Seminar Design, Inc. at 202-244-1448 ext. 1

FOR MORE INFORMATION ABOUT AHS TRAVEL STUDY PROGRAMS:

Please contact travel@ahsgardening.org or 703-768-5700, ext. 117.
Information is also available at www.ahsgardening.org/travel.