



# IRELAND AND NORTHERN IRELAND

SPRINGTIME CIRCUMNAVIGATION  
OF THE EMERALD ISLE

**MAY 20-30, 2026**

Aboard the 72-stateroom *Exploris One*



# Dear Friends,

**I AM EXCITED TO INVITE YOU** to join AHS for a springtime voyage around the Emerald Isle from May 20-30, 2026, a journey perfectly timed to showcase Ireland and Northern Ireland in bloom. This exclusive program, aboard the privately chartered *Exploris One*, offers a rare opportunity to experience flourishing gardens, dramatic coastlines, and rolling countryside at the height of the season.

Your journey begins with a hotel stay in Dublin, where a relaxed arrival and specially arranged excursions set the tone for the voyage to come. From Belfast, embark on an eight-night cruise tracing the legendary Wild Atlantic Way. Throughout, you'll explore celebrated landscapes, storied gardens, and charming towns.


Highlights include the dramatic basalt columns of the World Heritage-listed Giant's Causeway, the internationally renowned gardens of Mount Stewart, the sweeping wilderness of Connemara, the cultural richness of the Titanic Quarter, the windswept beauty of the Aran Islands, and the charming harbor town of Kinsale. Also, enjoy visits to the Cliffs of Moher and the historic walls of Derry, each destination curated with horticultural insight and cultural depth in mind.

I am delighted that you will be joined on this voyage by esteemed horticulturist and educator Keith Tomlinson, who will serve as AHS Host. A valued member of AHS' Horticultural Advisory Committee, Keith brings more than two decades of public garden leadership to this journey, having managed Meadowlark Botanical Gardens in Virginia for over 20 years. His global perspective on botanical gardens, shaped by visits to more than 45 countries, has deepened his insights into landscape history, plant conservation, and ecological interpretation. Keith's engaging talks and warm presence will enrich your experience at every turn.

Evenings in port, such as in Galway and Belfast, offer the chance to experience Ireland's vibrant music scene, savor local cuisine, or simply soak in the atmosphere at your own pace. Optional pre- and post-trip extensions in Dublin and Kilkenny provide further opportunities for cultural and horticultural discovery.

Space is limited, so early reservations are recommended.

Warmest regards,



Suzanne B. Laporte





# Highlights

- Customize your journey with **EXCURSION OPTIONS** at select ports, including walking excursions exploring Ireland's natural wonders.
- Delight in the natural beauty of **IRELAND'S CELEBRATED GARDENS**, from the wooded grounds of Glenveagh Castle and the grand Mount Stewart estate near Belfast to the charming Salthill Gardens in County Donegal. Conclude with a visit to Kylemore Abbey, where a stunning Victorian walled garden awaits amid the wild landscape of Connemara National Park.
- Experience the jewels of Ireland's famed Atlantic Coast including the dramatic **CLIFFS OF MOHER** and the bogs and grasslands of **CONNEMARA NATIONAL PARK**.
- **DOCK OVERNIGHT IN BELFAST AND GALWAY** for opportunities to dine ashore and to enjoy the cities' lively atmospheres and famed music scenes.
- Discover **BELFAST'S INTRIGUING HISTORY** including a visit to Titanic Belfast, a state-of-the-art museum on the site of the yard where the ill-fated ship was built.
- Travel along the Northern Ireland's Antrim coast to the **WORLD HERITAGE-LISTED GIANT'S CAUSEWAY**, the site of some 40,000 hexagonal basalt columns.



## AHS HOST



**KEITH TOMLINSON**, a member of the American Horticultural Society's Horticultural Advisory Committee, is a widely respected horticulturist and educator with decades of leadership in public garden management, plant conservation, and environmental interpretation. He served as the manager of Meadowlark Botanical Gardens in Vienna, Virginia, for over 20 years, providing leadership for the garden's development, operations, and public programming.

With a background in biogeography and botany, Keith has authored numerous articles on global garden travel, plant conservation, and outdoor education. His work has been featured in publications including *The New York*

*Times* and *The Wall Street Journal*, and he has received multiple honors, most recently the Land Ethics Award from Bowman's Hill Wildflower Preserve. A Biology Fellow at the Washington Academy of Sciences, Keith brings a global perspective to his work, having visited botanical gardens in over 45 countries.

Experts from Harvard Travels, National Trust Tours, and Williams Alumni Travel Study will also be giving lectures during the program.

### WHEN YOU TRAVEL WITH AHS, YOU MAKE A DIFFERENCE.

Designed for garden enthusiasts who love to explore horticultural wonders around the world, AHS Travel offers exceptional programs that include many exclusive experiences and unique insights. Your participation in an AHS Travel Study program supports the AHS nonprofit work to increase knowledge among gardeners, inspire passion for plants and the natural world, and encourage responsible stewardship of the earth.





Giant's Causeway

## ITINERARY

### Wednesday–Thursday, May 20–21

#### HOME / DUBLIN, IRELAND

Depart the U.S. on an overnight flight to Dublin, Ireland. Upon arrival, transfer to the hotel with time to settle in or stretch your legs on an optional guided walking tour of this vibrant capital city. This evening attend a welcome orientation and reception at the hotel.

CONRAD DUBLIN (R)

### Friday, May 22

#### BELFAST, NORTHERN IRELAND

Begin the day with your choice of two unforgettable experiences. One option visits Hillsborough Castle and Gardens, the official Northern Ireland residence of the British monarch. Explore the stately Georgian home and learn about its royal and political heritage, followed by a guided walk through the estate's beautifully designed grounds, led by one of Hillsborough's knowledgeable horticulturists. Alternatively, travel to Newgrange, a UNESCO World Heritage Site and one of the most remarkable prehistoric monuments in Europe. Older than Stonehenge and the Great Pyramid of Giza, this Neolithic passage tomb offers a powerful connection to Ireland's ancient past. Afterward, gather in Belfast for lunch at The Morning Star, a family-owned pub and restaurant dating back to 1810, known for its welcoming atmosphere and regional cuisine. In the afternoon, board *Exploris One* and settle into your cabin before joining fellow travelers for

the Captain's welcome reception and dinner. The evening concludes with lively entertainment featuring traditional Irish music and spirited dance.

*EXPLORIS ONE* (B,L,D)

### Saturday, May 23

#### BELFAST

Begin the day with a morning lecture, then set out on a tour of Belfast, Northern Ireland's capital. Visit the Titanic Belfast, an engaging exhibition located on the site where the famous ship was built, offering powerful insight into its history and legacy. In the afternoon, choose from three curated experiences. Option one is a visit to Mount Stewart House and Gardens, a stately home with some of the most renowned gardens in Northern Ireland. Option two is a whiskey-focused excursion to one of Belfast's top distilleries, where you'll learn about the heritage and process of Irish whiskey-making, followed by a guided tasting. Option three invites you to explore Belfast's complex political past led by local guides, featuring the city's iconic murals and peace walls. This evening, enjoy dinner aboard *Exploris One* or take the opportunity to dine ashore and experience Belfast's vibrant restaurant scene or traditional pub culture.

*EXPLORIS ONE* (B,L,D)



### Sunday, May 24

#### LISAHALLY

From our berth in Lisahally, choose between two enriching morning excursions. The first takes you to the UNESCO-designated Giant's Causeway, where you'll stroll among over 40,000 hexagonal basalt columns shaped by ancient volcanic activity, an awe-inspiring natural wonder steeped in legend. Explore both the science and folklore of this dramatic coastal site at the visitor center, then take in the rugged cliffs and crashing waves. Alternatively, discover the historic city of Derry-Londonderry, Ireland's only fully intact walled city dating back to the 17th century. Walk along its ramparts for sweeping views and delve into the city's rich past. Highlights include St. Columb's Cathedral, a landmark since 1633. Afterward, return to the ship for a leisurely afternoon at sea while our lecture series continues.

*EXPLORIS ONE* (B,L,D)

### Monday, May 25

#### KILLYBEGS, IRELAND

Spend a full day exploring County Donegal, a striking region in Ireland's northwest celebrated for its dramatic scenery, deep-rooted heritage, and artistic spirit. Choose between two rewarding excursions that highlight the area's natural and cultural richness. One option visits Glenveagh National Park, where rugged mountains, shimmering lakes, and wooded valleys frame a 19th-century





Cliffs of Moher



Cobh, Ireland

castle. Enjoy the views of the romantic estate and explore the beautifully tended gardens nestled within the wild landscape. Alternatively, take a scenic drive through Glen Colmcille, a region known for its strong cultural traditions and breathtaking views. Visit the Folk Museum to learn about daily life in rural Ireland, then continue to Salthill Gardens. Just steps from the Atlantic, this historic walled retreat has been lovingly cultivated by master gardener Elizabeth Temple into a serene and inspiring haven.

*EXPLORIS ONE (B,L,D)*

## Tuesday, May 26

### INISHMORE, ARAN ISLANDS / GALWAY

Begin with a morning lecture, then step ashore on Inishmore, the largest of the Aran Islands and one of Ireland's most isolated communities. Inhabited since the Stone Age, the island preserves Gaelic as its first language and maintains enduring customs. Traverse the stark limestone terrain, sample artisan cheese at a local goat farm, and visit Dún Aonghasa, a prehistoric fort dramatically set atop towering cliffs overlooking the Atlantic. In the afternoon, arrive in Galway, a harbor city known for its artistic spirit, cobbled streets, and thriving cultural life. Enjoy an overview followed by free time to explore. This evening, choose to remain in town for

an independent dinner or experience one of Galway's celebrated music venues.

*EXPLORIS ONE (B,L,D)*

## Wednesday, May 27

### GALWAY (CONNEMARA NATIONAL PARK & CLIFFS OF MOHER)

Today, delve into the landscapes and heritage of western Ireland with a choice of two memorable full-day excursions. One journey leads to the heart of Connemara, beginning at Kylemore Abbey. Explore its elegantly restored interiors and Victorian walled gardens before continuing to Ballynahinch Castle for a guided tour and ample time to wander the serene grounds. Alternatively, enjoy a leisurely day immersed in the natural beauty and rural charm of western Ireland. A delightful garden excursion option will be available, showcasing the region's lush greenery and rich horticultural traditions. After a local lunch, continue to the Burren National Park, where rare wildflowers, ancient tombs, and striking limestone formations reveal a landscape shaped by millennia of natural and human history. Return to the ship in the late afternoon and join a special sundowner cruise along

the Cliffs of Moher, as the setting sun casts its glow over one of Ireland's most breathtaking shorelines.

*EXPLORIS ONE (B,L,D)*

## Thursday, May 28

### VALENTIA / SKELLIG ISLANDS

As the lecture series continues this morning, *Exploris One* sails toward Valentia Island, nestled off the picturesque Kerry Peninsula. Upon arrival, choose between two inspiring excursions. One offers a stroll through Glanleam Gardens, a unique subtropical refuge where rare species from New Zealand, Chile, and the Himalayas thrive thanks to the Gulf Stream's temperate influence. The other invites you on a guided hike to Bray Head, where panoramic vistas stretch across the Atlantic, the Skellig Islands, and rugged cliffs. Both options include free time to wander Knightstown, a charming village renowned for its vibrant harbor, colorful facades, and warm local hospitality. In the afternoon, approach the Skellig Islands off the dramatic Dingle Peninsula coast to admire Skellig Michael, a UNESCO World Heritage Site. This remote island sanctuary preserves the ruins of an early Christian monastery, offering a glimpse into Ireland's ancient spiritual heritage.

*EXPLORIS ONE (B,L,D)*



Kinsale, Ireland



Skellig Islands



Friday, May 29

COBH

This morning, you'll arrive in Cobh, a picturesque harbor town steeped in history as the final departure point for countless Irish emigrants. Choose from three enriching experiences: Option 1: Visit Fota House, Arboretum & Gardens - a magnificent Regency estate celebrated for its elegant architecture and sprawling grounds filled with rare and exotic plant species. Stroll through beautifully designed landscapes that reflect generations of botanical care. Option 2: Explore the vibrant coastal town of Kinsale, renowned for its brightly painted buildings and reputation as Ireland's culinary capital. Enjoy a guided walk that includes tastings of local delicacies, followed by free time to discover the town's charming shops and cafés. Option 3: Stay close to the port and discover the maritime heritage of Cobh. Walk directly from your ship to the Titanic Experience, delving into the town's rich history. In the afternoon, return to the ship for a leisurely sail and take in the coastal views before gathering for the Captain's farewell reception and dinner.

EXPLORIS ONE (B,L,R,D)

Saturday, May 30

DUBLIN / HOME

After breakfast, disembark *Exploris One* in Dublin for flights home or join the Kilkenny post-trip extension. (B)

May 18-21, 2026

PRE-TRIP EXTENSION TO DUBLIN

Begin your journey with a two-night stay in the heart of Dublin. Visit storied landmarks like Trinity College and St. Patrick's Cathedral, enjoy a private tour of the historic Marsh's Library and explore the National Botanic Gardens.

May 30 - June 2, 2026

POST-TRIP EXTENSION TO KILKENNY

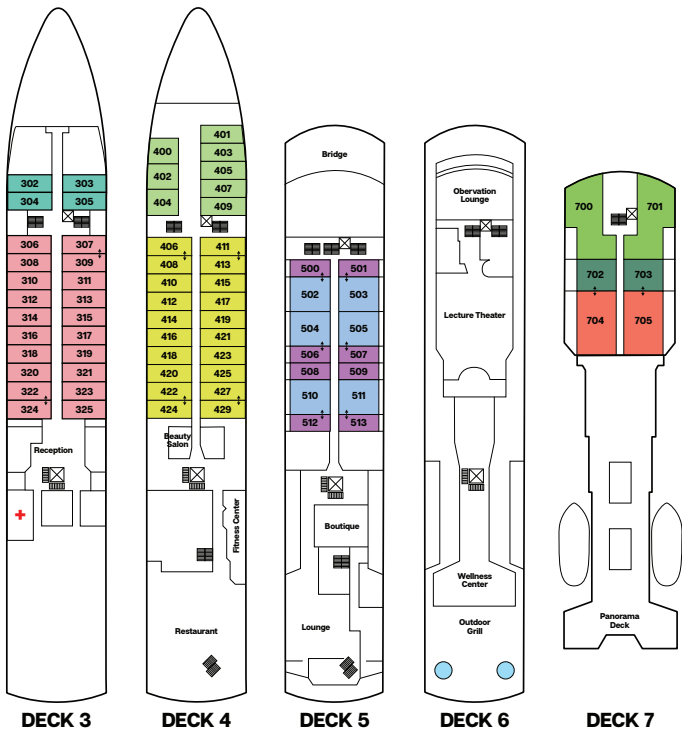
Extend your adventure with a three-night stay near medieval Kilkenny. Tour the grand halls of Kilkenny Castle, enjoy traditional music over dinner in a lively pub, and visit the legendary Rock of Cashel. This journey blends history, culture, and a touch of celebration in Ireland's scenic southeast.

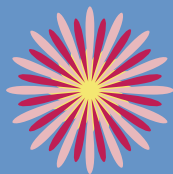


EXPLORIS ONE

Previously known as the *Silver Explorer* and owned by Silversea Cruises, *Exploris One* began her new life with French company Exploris Expeditions after a full renovation in 2023. Having known this vessel for many years, we know her to be ideal for small ship cruising. Her shallow draft allows us to access remote areas larger ships can't reach, and guests enjoy spacious deck areas perfect for spotting wildlife and soaking in the scenery. *Exploris One* combines adventure with exceptional comfort. All 60 staterooms and 12 suites are outside and finished to high standards. Le Grand Restaurant and the Outdoor Grill offer refined French and international cuisine. The Grand Salon and Panoramic Lounge provide breathtaking views. Onboard amenities include a conference room for lectures, hair salon, fitness center, massage room, sauna, and two hot tubs.

PROGRAM RATES (per person):	DOUBLE	SINGLE
<b>PREMIUM STATEROOM</b> , Deck 3, 156-168 sq ft,   two portholes, shower	\$8,990	\$13,990
<b>OCEAN STATEROOM</b> , Deck 3, 194 sq ft, picture window, shower	\$9,990	\$15,990
<b>SUPERIOR STATEROOM</b> , Deck 4, 173-190 sq ft, picture window, shower,	\$10,790	\$17,290
<b>DELUXE STATEROOM</b> , Deck 4, 194 sq ft, large picture window, shower	\$11,590	—
<b>BALCONY STATEROOM</b> , Deck 5, 171-180 sq ft, floor to ceiling glass door, French balcony, shower	\$12,590	—
<b>NAVIGATOR SUITE</b> , Deck 7, 312 sq ft, floor to ceiling glass door, 86 sq ft private balcony, tub & separate shower	\$13,990	—
<b>DISCOVERY SUITE</b> , Deck 5, 388 sq ft, bedroom, living room with sitting area, floor to ceiling glass doors, two French balconies, tub & separate shower	\$15,990	—
<b>GRAND SUITE</b> , Deck 7, 527 sq ft, bedroom, living room with sitting area, floor to ceiling glass door, 86 sq ft private balcony, tub & separate shower, walk-in closet	\$17,490	—
<b>OWNER'S SUITE</b> , Deck 7, 560 sq ft, bedroom, living room with sitting area, floor to ceiling glass door, large 160 sq ft private terrace, tub & separate shower, walk-in closet	\$18,990	—





## GENERAL INFORMATION

### AHS SOJOURNS

This custom trip is part of the AHS Sojourns travel program collection. For more information, visit [ahsgardening.org/travel](https://ahsgardening.org/travel)

#### PROGRAM RATES INCLUDE

All accommodations, meals, and excursions as specified in the itinerary, including nine breakfasts, eight lunches, eight dinners, one hotel night and eight nights aboard *Exploris One* • Comprehensive program of briefings, lectures and presentations • Group transfers on group arrival and departure dates • Baggage handling • Gratuities to porters, waitstaff, guides and drivers • Gratuities to shipboard personnel • Port charges • Entrance fees • Welcome wine reception in Dublin • Welcome and farewell receptions & dinners aboard *Exploris One* • House wine, beer, and soft drinks with all group lunches and dinners and onboard *Exploris One* • Mini bar • Filtered water on motorcoaches • Professional tour manager throughout the program

#### PROGRAM RATES DO NOT INCLUDE

U.S. domestic and international airfare • Passport/visa expenses • Medical expenses and immunizations • Private airport transfers or airport transfers outside of group arrival and departure days • Travel and trip cancellation insurance • Excursions that deviate from the scheduled tour options • Airline baggage charges • Meals not specified in the itinerary; dishes and beverages not part of the included meals; premium alcoholic drinks • Laundry or dry cleaning • Telephone, fax, Internet and email charges • Room service • Other items of a personal nature

#### WHAT TO EXPECT

This is a moderately strenuous program that can be physically demanding and full of activity at times. Participants should be in good health, physically fit, and able to keep pace with the group without assistance from tour staff. To make the most of each destination, many shore excursions will be active and involve extended time off the ship. These full, adventure-filled days are balanced with opportunities to relax on board while cruising—enjoying coastal scenery, onboard amenities, and enriching lectures. On land, travel will be by comfortable, air-conditioned motorcoaches, with the longest drives lasting 1.5 hours. Daily excursions may involve up to two miles of walking (sometimes more on optional hikes), often over uneven ground, grassy areas, unpaved trails, or cobblestoned streets. Some historic sites may lack elevators or handrails on stairs. While *Exploris One* is equipped with an elevator serving all passenger decks, it is not designed for wheelchair-dependent guests and does not offer accessible cabins or chair lifts. Guests should feel confident navigating the ship in choppy seas. This journey promises not only unforgettable sights, but also meaningful cultural encounters and time to unwind. As with any travel experience, flexibility, curiosity, and a spirit of adventure will go a long way. While participation in each activity is optional (aside from essential group transfers), we hope you'll take full advantage of this thoughtfully designed program. Please note that all travelers will be asked to follow safety and health guidelines set by Criterion Travel, the ship's crew, local staff and host country laws.

#### AHS TRAVEL

This custom trip is offered in collaboration with Criterion Travel and is part of the AHS Sojourns travel program collection. For more information, visit [ahsgardening.org/travel](https://ahsgardening.org/travel).

**AHS Travel programs are designed to offer immersive experiences and often involve long days filled with exploration and extensive walking on uneven terrain. To participate in a program, it is recommended to be in good physical condition and prepared to walk up to two miles each day.**

#### GROUP SIZE

This program is limited to 118 participants, including travelers from American Horticultural Society, National Trust Tours, Harvard Alumni Travels, & Williams Alumni Travel Study.

#### RESERVATIONS & PAYMENTS

To reserve space, please email Criterion Travel at [res@critteriontravel.com](mailto:res@critteriontravel.com) or return the completed reservation form with your \$1,000 per person deposit to: Criterion Travel, 4250 SW Hall Blvd., Beaverton, OR 97005, or fax to (650) 560-6400. Balance of payment is due January 20, 2026. After January 20, 2026, full payment is due upon registration. Final payment may be made by check, wire transfer or credit card (credit card payments will incur a processing fee of 2%).

#### FLIGHTS

U.S. domestic and international airfare is not included in the program rates. Participants are responsible for their own air arrangements. Please do not purchase airline tickets until the operation of the tour is confirmed by Criterion Travel. Further information about making flight arrangements will be sent to confirmed participants. When it is time to make flight arrangements, the AHS's flight and travel services provider, Cranky Concierge, provides optional flight and travel arrangement services for a seamless travel experience, including proactive flight monitoring and travel disruption assistance: [www.crankyconcierge.com/ahsgardening](https://www.crankyconcierge.com/ahsgardening). You are also welcome to book your air transportation through your local travel agent, an online travel site, or the airline of your choice.

#### PASSENGER CANCELLATIONS & REFUNDS

Upon payment of a deposit, all reservations are subject to the cancellation provisions set forth below and by which the passenger agrees to be bound. Cancellations shall not be effective until they are received in writing and confirmed by Criterion Travel. Deposits are refundable (less a \$250 per person admin fee) if written notice of cancellation is received within 30 days of booking; after that, deposits are 100% nonrefundable. After the **January 20, 2026** final payment deadline: All payments are 100% nonrefundable, regardless of booking date. For this reason, we strongly urge participants to purchase trip cancellation insurance. No refunds will be made for any part of this program on which you choose not to participate. **NOTE:** Criterion Travel does not accept liability for any airline cancellation penalty incurred by the purchase of a nonrefundable ticket in conjunction with this tour.

#### TERMS & CONDITIONS

Complete Terms and Conditions including a Statement of Responsibility will be made available at the time of registration, or in advance upon request. A signed "Terms & Conditions, Release from Liability, Assumption of Risk and Binding Arbitration Clause" is required from each applicant prior to participation on the tour.

#### TRAVEL INSURANCE

Travel Insurance is not included in the tour cost, but participants are strongly encouraged to purchase a travel protection plan in conjunction with this tour, including coverage of trip cancellation, trip interruption, emergency evacuation/repatriation, medical expenses, lost or damaged baggage, and other expenses and/or losses incurred due to unexpected situations. One travel insurance provider to consider is USI Affinity Travel Insurance Services. For more information on the plan for AHS travelers, visit [www.ahsgardening.org/travel](https://www.ahsgardening.org/travel). Information is also available at this link regarding optional flight and travel arrangement services.

#### HEALTH

At AHS Travel, ensuring the health and safety of our guests is our top priority. All participants will be required to follow safety/sanitization protocols set forth by Criterion Travel, local staff, and host country laws. All participants should be in good health and able to keep up with an active group of travelers without assistance from tour staff. By forwarding the deposit for passage, the passenger certifies that he/she does not have any physical or other condition or disability that would create a hazard for him/herself or other passengers.

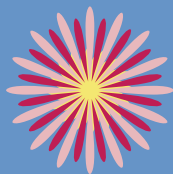
#### ITINERARY CHANGES

The itinerary presented for this tour is subject to modification and change by Criterion Travel. Every reasonable effort will be made to operate the program as planned; however, should unforeseen world events and conditions require the itinerary to be altered, Criterion Travel reserves the right to do so for the safety and best interest of the group. Any extra expenses incurred in this situation are the responsibility of the participant.

#### AHS PROGRAM CONTENT

The AHS and its travel partners reserve the right to take photographs, videos, and audio ("Program Content") during the travel program for editorial, promotional, and commercial use by the AHS or authorized third parties. By making a reservation on an AHS Travel program, the participant agrees to allow his/her likeness to be used by AHS or AHS-authorized third parties without compensation to the participant. AHS reserves the right to crop, alter, or combine the Program Content with other images, text, or media at its sole discretion and to use the Program Content in any medium or format, including but not limited to print, digital, or online media. This authorization grants AHS and/or authorized third parties the right to use the photographs, videos, and audio worldwide and in perpetuity, without further consent or compensation. Participants who prefer that their voice and/or image not be used must notify AHS in writing prior to the beginning of the program.

California Seller of Travel  
Program CST #2088800-40



## RESERVATION FORM

NAME **Participant 1**

NAME **Participant 2**

PREFERRED NAME (FOR NAME TAG) **Participant 1**

PREFERRED NAME (FOR NAME TAG) **Participant 2**

ADDRESS

CITY / STATE / ZIP

HOME PHONE

CELL PHONE

E-MAIL ADDRESS **Participant 1**

E-MAIL ADDRESS **Participant 2**

### ACCOMMODATIONS (not guaranteed):

Please indicate your cabin category preferences: ☐ 1st Choice \_\_\_\_\_ ☐ 2nd Choice \_\_\_\_\_

Bed Preference: ☐ One Bed ☐ Two Beds

☐ **Double Occupancy.** I will share a room with \_\_\_\_\_

☐ **Single Occupancy.** ☐ I would like a roommate but will pay the single supplement if one cannot be found

### TOUR DOCUMENTS:

Criterion Travel will send all documents pertaining to the tour by email to the email address listed above.

☐ *If you wish to receive hardcopy versions of the tour documents by post as well, please check this box.*

*Paper documents will not be sent to your home address unless box is checked.*

**DEPOSIT** (\$1,000 per person): \_\_\_\_\_ #of persons \_\_\_\_\_ Amount Enclosed

☐ VISA ☐ MC ☐ AMEX ☐ CHECK (make payable to Criterion Travel)

CARD #

EXP. DATE

NAME AS IT APPEARS ON CARD

CVV SECURITY CODE

**EACH PARTICIPANT MUST SIGN.** *By registering and paying the deposit for this tour, registrant acknowledges he/she has carefully read and understands all information contained in the tour brochure, recognizes and accepts any risks therein, agrees to be bound by the terms and conditions above.*

SIGNATURE / DATE **Participant 1**

SIGNATURE / DATE **Participant 2**

### COMPLETE AND RETURN THIS FORM TO:

Criterion Travel  
4250 SW Hall Blvd.  
Beaverton, OR 97005

### FOR MORE INFORMATION ABOUT AHS TRAVEL PROGRAM

Please contact **(703) 768-8801**  
Information is also available at

[www.ahsgardening.org/travel](http://www.ahsgardening.org/travel)

### TO REGISTER BY EMAIL:

[res@criteriontravel.com](mailto:res@criteriontravel.com)





AMERICAN  
HORTICULTURAL  
SOCIETY

