



AMERICAN
HORTICULTURAL
SOCIETY

Indonesia

BALI, BORNEO AND BEYOND

ABOARD THE 140-PASSENGER
HERITAGE ADVENTURER

WITH HOLLY AND OSAMU SHIMIZU

SEPTEMBER 25-OCTOBER 8, 2027

Dear Friends,

I am delighted to invite you to experience the rich cultural traditions and remarkable natural beauty of the Indonesian archipelago through a thoughtfully curated journey across Bali, Java, Borneo, Sumbawa, and Komodo, some of its most captivating islands. Throughout this program, we explore a living tapestry of cultivated and wild landscapes, from terraced rice fields to rainforest ecosystems rich in tropical flora, where plants shape daily life and cultural identity.

Our journey begins in Bali, where emerald rice terraces and lush landscapes reflect a deeply rooted relationship between people and the land. These environments offer insight into generations of knowledge about cultivation, climate, and land stewardship. A cooking demonstration and a captivating gamelan performance bring these traditions vividly to life.

Aboard the deluxe *Heritage Adventurer*, we sail eastward through Java, Borneo, and the remote islands of Sumbawa and Komodo. Along the way, we visit three UNESCO World Heritage sites: Tanjung Puting National Park, home to the renowned Camp Leakey orangutan rehabilitation center, the magnificent Borobudur Temple Compound, and Komodo National Park, where the famed Komodo dragon roams. Days ashore invite exploration of richly biodiverse environments, from rainforest canopies and riverine habitats to landscapes shaped by both natural systems and human care. You will observe a remarkable range of tropical plant life and gain insight into the ecological richness that defines the region.

Accompanying you are AHS hosts Holly and Osamu Shimizu, whose shared passion for plants, landscapes, and cultural exchange will enrich each step of the journey, illuminating connections between horticulture, ecology, and daily life.

With nine nights aboard ship and two nights at a beachfront resort in Bali, the journey offers both depth and ease. Traveling in late September and early October, you will enjoy warm weather and fewer crowds, ideal conditions for meaningful exploration.

I hope you will join us for this unforgettable journey. Space is limited and our travel programs often sell out, so we recommend making your reservation early.

Warmest regards,



Suzanne B. Laporte
President & CEO



Highlights

- Enjoy two nights of 5-star beachfront accommodation in Bali and nine nights aboard the deluxe, spacious *Heritage Adventurer*.
- Visit three UNESCO World Heritage sites: **Tanjung Puting National Park**, Borneo; the Buddhist **Borobudur Temple Compound**, Java; and **Komodo National Park**, Komodo Island.
- Witness **orangutans** interacting in their natural habitat at Camp Leakey, a world-famous rehabilitation and release site located in Tanjung Puting National Park; stroll the scenic beaches and trails of Komodo National Park to look for water buffalo, Timor deer, birds and the park's namesake, the elusive **Komodo dragon**.
- Engage with community members through **specially arranged experiences**, including a cooking demonstration, gamelan orchestra performance, a weaving demonstration, and overview of the traditional *subak* water management of a terraced rice field.
- Enjoy multiple opportunities to **swim** and **snorkel** amidst vibrant sea life in turquoise waters, including reef fish, sharks, sea turtles, manta rays, and dolphins.
- Opt to visit several gardens, including the expansive **Bali Botanical Garden**, a delightful orchid garden, and the about the peaceful **Narmada Water Garden**, designed for 18th century kings.



Narmada Water Garden



Traditional gamelan, Bali

AHS HOSTS



HOLLY AND OSAMU SHIMIZU are a renowned horticultural couple whose shared passion for gardening has inspired and beautified landscapes worldwide. Holly, a member of the American Horticultural Society Board of Directors and retired Executive Director of the United States Botanic Garden, is a globally acclaimed horticulturist. Recognized for her ten-year tenure as a host on the popular Victory Garden television show on PBS, she has worked in gardens throughout the world and has garnered numerous accolades, including The Scott Medal & Award from The Scott Arboretum of Swarthmore College, the Thomas Roland Medal for outstanding contributions to

horticultural education from the Massachusetts Horticultural Society, and the Professional Award for an Outstanding Public Garden Director from the American Horticultural Society. Holly's dedication to nurturing an appreciation for plants is reflected in her writings for numerous publications and her role as an international flower show judge. Osamu grew up in Japan where he studied and worked in both historic and contemporary Japanese gardens. He worked in Europe for over ten years helping with garden designs, mapping, and garden improvements. In 1982 he started his own garden design/build company, Shimizu Landscape Design. His portfolio showcases an array of gardens, with a significant emphasis on Japanese aesthetics and a fusion of eastern and western influences.

WHEN YOU TRAVEL WITH AHS, YOU MAKE A DIFFERENCE.

Designed for garden enthusiasts who love to explore horticultural wonders around the world, AHS Travel offers exceptional programs that include many exclusive experiences and unique insights. Your participation in an AHS Travel program supports the AHS's nonprofit work to increase knowledge among gardeners, inspire passion for plants and the natural world, and encourage responsible stewardship of the earth.



ITINERARY

Saturday-Monday, September 25-27

HOME / BALI

Depart home on an overnight flight to Bali, crossing the International Date Line. Arrive on September 27 and transfer to the beachfront Paradisus resort, known for its spacious rooms, tropical gardens, and direct access to pristine beaches. Take time to relax and refresh before meeting fellow travelers at the welcome orientation and reception. Paradisus by Meliá Bali Hotel (R)

Tuesday, September 28

BALI

After a morning lecture, journey through Bali's central mountains to visit the UNESCO-listed Jatiluwih Rice Terraces in Bali's central highlands. Learn about the subak irrigation system, a 9th-century method still used today, and enjoy the lush scenery of emerald paddies. Choose to return to Bali for free time, or extend your touring with a guided exploration of the Bali Botanical Garden, including an array of rhododendrons, orchids, medicinal plants, and beautifully maintained greenhouses. Paradisus by Meliá Bali Hotel (B,L)

Wednesday, September 29

BALI

Touring options include a guided tour of the Bali Museum, home to an exceptional collection of paintings, traditional crafts, ceremonial tools, and intricately carved masks; a private gamelan orchestra performance, immersing yourself in the hypnotic rhythms of Balinese music; a visit to an orchid garden; and an exploration of Ubud Palace. Later, board the *Heritage Adventurer*. *Heritage Adventurer* (B,L,D)

Thursday, September 30

PROBOLINGGO, EAST JAVA

Begin the day with a short walk through a coastal mangrove forest to learn about the importance of this special ecosystem. In the city of Probolinggo, explore the historic quarter by becak (traditional pedicab), then continue to Jabung Temple, a well-preserved ancient temple from the Majapahit era. Return to the ship for the Captain's welcome reception and dinner. *Heritage Adventurer* (B,L,R,D)

Friday, October 1

BOROBUDUR, JAVA

Depart from the coastal city of Semarang for a full-day journey past rice fields and small towns to central Java. Explore the magnificent 8th-century Buddhist Borobudur Temple near Yogyakarta, a UNESCO World Heritage site and architectural marvel adorned with intricate stone reliefs and thousands of Buddha statues. Learn about its construction, history, and spiritual significance from expert guides, experiencing one of the world's greatest cultural treasures. Return to the vessel in the early evening. *Heritage Adventurer* (B,L,D)

Saturday, October 2

AT SEA

A leisurely day at sea, enjoying expansive ocean views as the ship sails south toward Lombok. Relax on board in the lounges, dine in the gourmet restaurant or indoor/outdoor bistro, or enjoy the heated saltwater pool, spa, sauna, and gym. Enriching lectures are also offered throughout the day. *Heritage Adventurer* (B,L,D)



Tanjung Puting National Park in Borneo



Komodo National Park

Sunday, October 3

CAMP LEAKEY, TANJUNG PUTING NATIONAL PARK, BORNEO

Travel through Borneo by traditional “klotok” river boats along the Kumai and Sekonyer rivers, surrounded by dense jungle and the sounds of hornbills and macaques, to Camp Leakey, a world-renowned orangutan rehabilitation and release site. On arrival, look for orangutans in their natural habitat alongside researchers and park rangers. Gain insight into ongoing conservation efforts and the delicate balance of rainforest ecosystems.

Heritage Adventurer (B,L,D)

Monday, October 4

AT SEA

Continue cruising and relax aboard ship as the lecture program continues, providing deeper context on the history, ecology, and culture of the regions visited. Take in the sweeping seascapes from the deck or enjoy a quiet moment in the ship’s lounge.

Heritage Adventurer (B,L,D)

Tuesday, October 5

SUMBAWA BESAR & SATONDA ISLAND

Morning visit to Pamulung Village, where you’ll witness traditional rice harvesting, pounding, and intricate weaving techniques. In the afternoon, snorkel near Satonda Island, a secluded volcanic crater teeming with vibrant marine life—a hidden paradise shaped by ancient geological forces.

Heritage Adventurer (B,L,D)

Wednesday, October 6

KOMODO NATIONAL PARK

Spend a full day exploring Komodo National Park, a UNESCO World Heritage site. Walk trails with local rangers in search of the famed Komodo dragons, and encounter deer, wild boar, water buffalo, and exotic birdlife. In the afternoon, snorkel among prolific marine life in crystal-clear waters from renowned Pink Beach, and enjoy the breathtaking photo opportunities.

Heritage Adventurer (B,L,D)

Thursday, October 7

LOMBOK

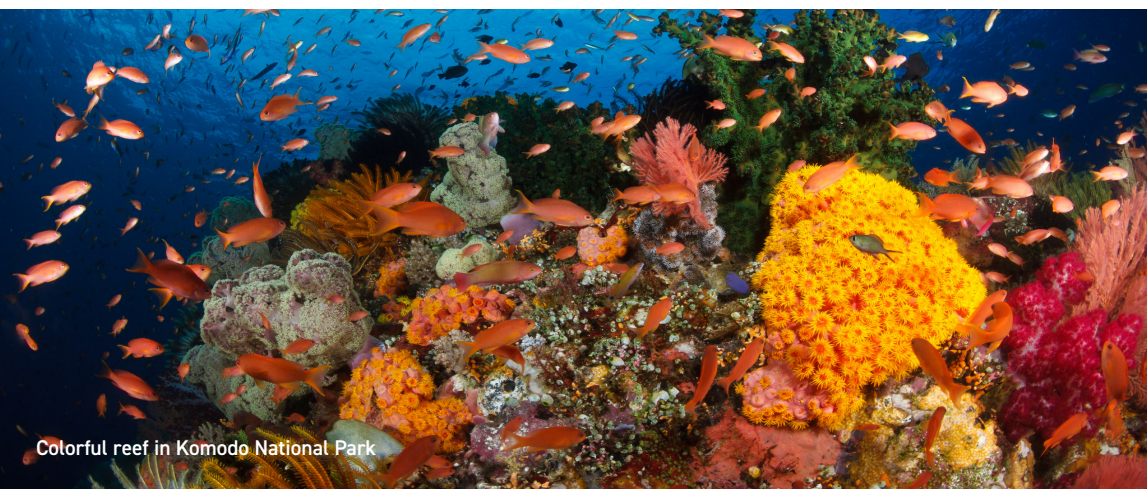
Delve into the cultural and natural wonders of Lombok. Visit the historic 18th-century Pura Lingsar temple complex and explore the royal garden of the Narmada Water Palace. An optional guided bike ride is available at an additional cost. Conclude the day with the captain’s farewell reception and dinner on board.

Heritage Adventurer (B,L,R,D)

Friday, October 8

DISEMBARK / HOME

After breakfast, disembark in Benoa, Bali, and transfer to the airport for your return flight home. (B)



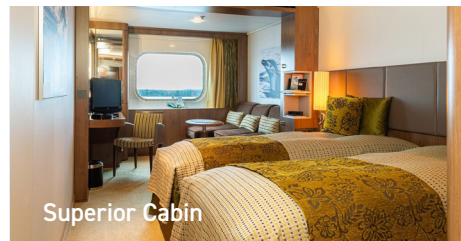
Colorful reef in Komodo National Park



Temple surrounded by flowers



Observation Deck



Superior Cabin



Heritage Suite

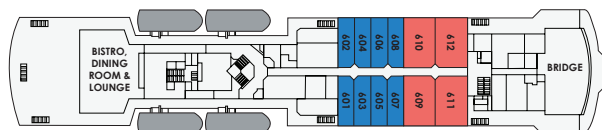
HERITAGE ADVENTURER

Originally built as the *MS Hanseatic*—one of the most acclaimed expedition ships of its era—the *Heritage Adventurer* now welcomes just 140 guests, ensuring uncommon space, comfort, and advantages such as faster disembarkations and reduced single supplements. Owned and operated by Heritage Expeditions, a pioneer in remote travel since 1985, the *Heritage Adventurer* boasts a fleet of 14 Zodiacs, maximizing time ashore or on the water. The ship's well-appointed cabins offer separate living and sleeping areas, king or twin beds, ample storage, a writing desk, and modern ensuite bathrooms. Twin guest elevators provide easy access to all levels. Public spaces include two panoramic lounges, a 360-degree Observation Deck, and both a gourmet restaurant and an indoor/outdoor bistro. Meals are served in the gourmet restaurant and in the indoor/outdoor bistro—both options offer plenty of seating and large picture windows. Additional amenities include an open-air saltwater pool that can be heated or chilled, a hot tub encased in glass for all-weather use, a dry-heat Finnish sauna, a European steam room, a well-equipped gym, and a spa.

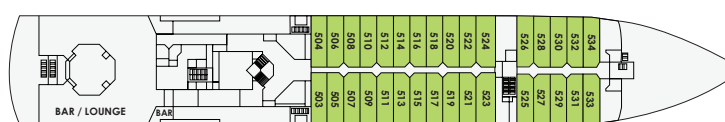
PROGRAM RATES (PER PERSON)

CATEGORY		DOUBLE	SINGLE
1	DECK 3 STANDARD CABIN 237 sq ft; twins or king bed; two portholes	\$10,990	\$14,990
2	DECK 4 SUPERIOR CABIN 237 sq ft; twins or king bed; window	\$11,990	\$17,990
3	DECK 5 SUPERIOR CABIN 237 sq ft; twins or king bed; window	\$13,990	\$20,990
4	DECK 6 SUPERIOR CABIN 237 sq ft; twins or king bed; window	\$15,490	—
5	DECK 6 HERITAGE SUITE 475 sq ft; king bed; double window	\$19,990	—

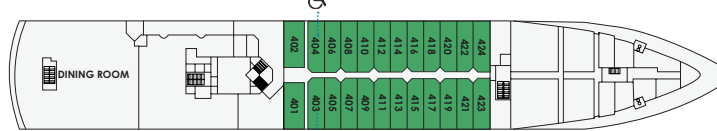
DECK 6



DECK 5

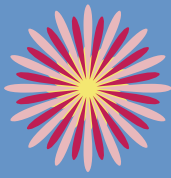


DECK 4



DECK 3





GENERAL INFORMATION

AHS SOJOURNS

AHS TRAVEL

This custom trip is offered in collaboration with Criterion Travel and is part of the AHS Sojourns travel program collection. For more information, visit ahsgardening.org/travel.

AHS Travel programs are designed to offer immersive experiences and often involve long days filled with exploration and extensive walking on uneven terrain. To participate in a program, it is recommended to be in good physical condition and prepared to walk up to three miles each day.

PROGRAM LENGTH, CAPACITY

14 days roundtrip from the U.S. This program welcomes up to 140 participants, including participants from the American Horticultural Society and co-sponsoring organizations such as Harvard Alumni Travels, National Trust Tours, Dartmouth, Cornell's Adult University, and Yale Alumni Academy.

PROGRAM RATES INCLUDE

Two hotel nights and nine nights aboard *Heritage Adventurer* • Meals and excursions as specified in the itinerary, including eleven breakfasts, ten lunches, and nine dinners • Shared airport transfers on group arrival and departure dates • Baggage handling • Gratuities to shipboard personnel, porters, waitstaff, guides, and drivers • Port charges • Entrance fees • Welcome and farewell wine receptions • House wine, beer, and soft drinks with lunches and dinners • Filtered water on motorcoaches • Complete packet of pre-departure information • Professional tour manager throughout the program

PROGRAM RATES DO NOT INCLUDE

U.S. domestic and international airfare • Passport/visa expenses • Medical expenses and immunizations • Private airport transfers or airport transfers outside of group arrival and departure dates • Travel and trip cancellation insurance • Excursions that deviate from the scheduled tour options • Airline baggage charges • Meals not specified in the itinerary; dishes and beverages not part of the included meals; liquor or soft drinks except as noted • Laundry or dry cleaning • Telephone, internet and email charges • Room service • Other items of a personal nature.

FLIGHTS

U.S. domestic and international airfare is not included in the program rates. Participants are responsible for their own air arrangements. Please do not purchase airline tickets until the operation of the tour is confirmed by Criterion Travel. Further information about making flight arrangements will be sent to confirmed participants. When it is time to make flight arrangements, the AHS's flight and travel services provider, Cranky Concierge, provides optional flight and travel arrangement services for a seamless travel experience, including proactive flight monitoring and travel disruption assistance: www.crankyconcierge.com/ahsgardening. You are also welcome to book your air transportation through your local travel agent, an online travel site, or the airline of your choice.

WHAT TO EXPECT

This is a moderately strenuous program that is, at times, physically demanding and busy. Daily excursions involve up to two miles of walking at a time, often on uneven terrain or in humidity. In some instances, elevators are unavailable, and stairs may not have handrails. You will be required to remove your shoes while visiting temples, shrines, and a number of other sites. You will need to climb into and out of Zodiacs for an onshore excursion (there will be staff and crew members on hand to assist). Participants must be physically fit, active, and in good health.

RESERVATIONS & PAYMENTS

To reserve space, please email Criterion Travel at res@critteriontravel.com or return the completed reservation form with your \$1,000 per person deposit to: Criterion Travel, 4250 SW Hall Blvd., Beaverton, OR 97005, or fax to (650) 560-6400. Balance of payment is due May 28, 2027. After May 28, 2027, full payment is due upon registration. Final payment may be made by check, bank transfer, or credit card (credit card payments will incur a 2% fee).

A NOTE ABOUT RATES

Tour rates are based upon current fuel prices, currency values, taxes, tariffs, and a minimum number of participants. While we will do everything possible to maintain the listed rates, they are subject to change. If there are significant changes, details and costs will be advised prior to departure.

TERMS & CONDITIONS

Complete Terms and Conditions, including Statement of Responsibility, will be made available to you at the time of registration, or in advance upon request. A signed "Terms & Conditions, Release from Liability, Assumption of Risk and Binding Arbitration Clause" is required from each applicant prior to participation on the tour.

PASSENGER CANCELLATIONS & REFUNDS

Upon payment of a deposit, all reservations are subject to the cancellation provisions set forth below and by which the passenger agrees to be bound. Cancellations shall not be effective until they are received in writing and confirmed by Criterion Travel. Deposits are refundable (less a \$250 per person admin fee) if written notice of cancellation is received within 30 days of booking; after that, deposits are 100% nonrefundable. After the May 28, 2027 final payment deadline, all payments are 100% nonrefundable, regardless of booking date. For this reason, we strongly urge participants to purchase trip cancellation insurance. No refunds will be made for any part of this program on which you choose not to participate. If a staff member is unable to participate, no refund will be made, but Criterion Travel will make every effort to find a replacement with similar qualifications. NOTE: Criterion Travel does not accept liability for any airline cancellation penalties incurred by the purchase of non-refundable tickets.

TRAVEL INSURANCE

Travel insurance is not included in the tour cost, but we strongly recommend that all participants purchase a travel protection plan. Be sure to review your options carefully and choose a policy that best suits your needs. Coverage should include trip cancellation or interruption, medical expenses, emergency evacuation or repatriation, lost or delayed baggage, and other unexpected travel-related expenses. One provider to consider is USI Affinity Travel Insurance Services. For details on the plan available to AHS travelers, visit ahsgardening.org/travel-information/. This link also includes information about optional flight and travel arrangement services.

HEALTH

At AHS Travel, ensuring the health and safety of our guests is our top priority. All participants will be required to follow safety/sanitization protocols set forth by Criterion Travel, local staff, and host country laws. All participants should be in good health and able to keep up with an active group of travelers without assistance from tour staff. By forwarding the deposit for passage, the participant certifies that he/she does not have any physical or other condition or disability that would create a hazard for him/herself or other participants.

ITINERARY CHANGES

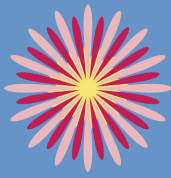
The itinerary presented for this tour is subject to modification and change by Criterion Travel, the tour operator. Every reasonable effort will be made to operate the program as planned; however, should unforeseen world events and conditions require the itinerary to be altered, the tour operator reserves the right to do so for the safety and best interest of the group. Any extra expenses incurred in this situation are the responsibility of the participant.

AHS PROGRAM CONTENT

The AHS and its travel partners reserve the right to take photographs, videos, and audio ("Program Content") during the travel program for editorial, promotional, and commercial use by the AHS or authorized third parties. By making a reservation on an AHS Travel program, the participant agrees to allow his/her likeness to be used by AHS or AHS-authorized third parties without compensation to the participant. AHS reserves the right to crop, alter, or combine the Program Content with other images, text, or media at its sole discretion and to use the Program Content in any medium or format, including but not limited to print, digital, or online media. This authorization grants AHS and/or authorized third parties the right to use the photographs, videos, and audio worldwide and in perpetuity, without further consent or compensation. Participants who prefer that their voice and/or image not be used must notify AHS in writing prior to the beginning of the program.

FOR MORE INFORMATION

Please call: (888) 328-2089 or (650) 328-2089.
California Seller of Travel Program CST #2088800-40



RESERVATION FORM

NAME Participant 1

NAME Participant 2

PREFERRED NAME (FOR NAME TAG) Participant 1

PREFERRED NAME (FOR NAME TAG) Participant 2

ADDRESS

CITY / STATE / ZIP

HOME PHONE

CELL PHONE

E-MAIL ADDRESS Participant 1

E-MAIL ADDRESS Participant 2

ACCOMMODATIONS (not guaranteed):

Please indicate your cabin category preferences: 1st Choice _____ 2nd Choice _____

Bed Preference: One Bed Two Beds

Double Occupancy. I will share a room with _____

Single Occupancy. I would like a roommate but will pay the single supplement if one cannot be found

TOUR DOCUMENTS:

Criterion Travel will send all documents pertaining to the tour by email to the email address listed above.

If you wish to receive hardcopy versions of the tour documents by post as well, please check this box.

Paper documents will not be sent to your home address unless box is checked.

DEPOSIT (\$1,000 per person): _____ #of persons _____ Amount Enclosed

VISA MC AMEX CHECK (make payable to Criterion Travel)

CARD #

EXP. DATE

NAME AS IT APPEARS ON CARD

CVV SECURITY CODE

EACH PARTICIPANT MUST SIGN. *By registering and paying the deposit for this tour, registrant acknowledges he/she has carefully read and understands all information contained in the tour brochure, recognizes and accepts any risks therein, agrees to be bound by the terms and conditions above.*

SIGNATURE / DATE Participant 1

SIGNATURE / DATE Participant 2

TO REGISTER BY PHONE, CALL:

Criterion Travel at (888) 328-2089

COMPLETE AND RETURN THIS FORM TO:

Criterion Travel , 4250 SW Hall Blvd., Beaverton, OR 97005
or by email at res@critteriontravel.com

FOR MORE INFORMATION ABOUT
AHS TRAVEL STUDY PROGRAM

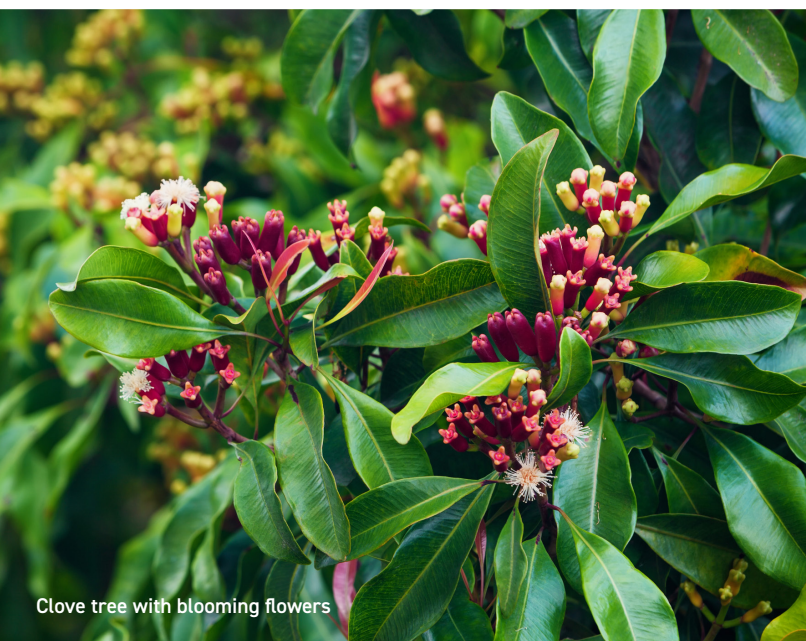
Please contact (703) 768-8801. Information is also available
at www.ahsgardening.org/travel.



AMERICAN
HORTICULTURAL
SOCIETY



Croton, Variegated Laurel & Staghorn Fern—Bali Botanical Gardens



Clove tree with blooming flowers



INDONESIA

BALI, BORNEO AND BEYOND

ABOARD THE 140-PASSENGER
HERITAGE ADVENTURER

SEPTEMBER 25-OCTOBER 8, 2027

WITH HOLLY AND OSAMU SHIMIZU

Water lilies